

Indigo Cottage



• A Free Project Sheet •
• NOT FOR RESALE •

By Mary Jane Carey



Quilt Design by Mary Jane Carey

Quilt 2

Skill Level: Beginner

 Henry Glass & Co., Inc.



facebook

Finished Quilt Size: 23" x 31"
49 West 37th Street, New York, NY 10018
tel: 212-686-5194 fax: 212-532-3525
Toll Free: 800-294-9495
www.henryglassfabrics.com

INDIGO COTTAGE

Quilt 2

Fabrics in the Collection



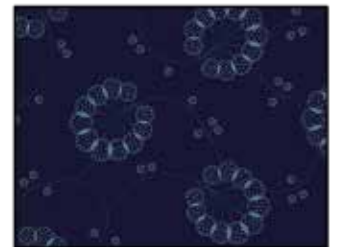
Embroidery Blocks - Royal
2115-77



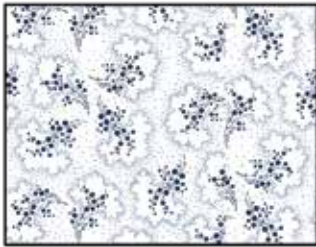
Border Stripe - Royal
2116-77



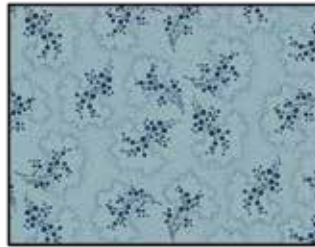
Large Plume - Lt. Blue
2117-17



Large Plume - Royal
2117-77



Blooming Berries - White
2118-11



Blooming Berries - Lt. Blue
2118-17



Geometric - Med. Blue
2119-71



Paisley - White
2120-11



Paisley - Royal
2120-77



Circle Swirl - Lt. Blue
2121-17



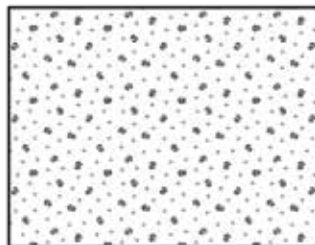
Circle Swirl - Royal
2121-77



Small Dots - White
2122-11



Small Dots - Med. Blue
2122-71



Ditsy Daisy - White
2123-11



Ditsy Daisy - Med. Blue
2123-71



Ditsy Daisy - Royal
2123-77

Materials

1 panel	Embroidery Blocks - Royal (A)	2115-77
$\frac{3}{8}$ yard	Paisley - White (B)	2120-11
$\frac{3}{8}$ yard	Circle Swirl - Lt. Blue (C)	2121-17
$\frac{1}{2}$ yard	Small Dots - Med. Blue (D)	2122-71*
$\frac{1}{4}$ yard	Blooming Berries - White (E)	2118-11
1 $\frac{1}{4}$ yards	Circle Swirl - Royal (Backing)	2121-77

*Includes binding

Cutting Instructions

Please note: all strips are cut across the width of fabric (WOF) from selvage to selvage edge unless otherwise noted.

From the Embroidery Blocks - Royal (A), fussy cut:

- (6) 7 $\frac{1}{2}$ " blocks.

From the Paisley - White (B), cut:

- (1) 1 $\frac{1}{2}$ " x WOF strip. Sub-cut (3) 1 $\frac{1}{2}$ " x 7 $\frac{1}{2}$ " strips.
- (1) 1 $\frac{1}{2}$ " x WOF strip. Sub-cut (2) 1 $\frac{1}{2}$ " x 15 $\frac{1}{2}$ " strips.
- (1) 1 $\frac{1}{2}$ " x WOF strip. Sub-cut (2) 1 $\frac{1}{2}$ " x 17 $\frac{1}{2}$ " strips.
- (2) 1 $\frac{1}{2}$ " x 23 $\frac{1}{2}$ " WOF strips.

From the Circle Swirl - Lt. Blue (C), cut:

- (1) 2 $\frac{1}{2}$ " x WOF strip. Sub-cut (4) 2 $\frac{1}{2}$ " squares.
- (2) 1 $\frac{1}{2}$ " x 25 $\frac{1}{2}$ " WOF strips.
- (1) 1 $\frac{1}{2}$ " x WOF strip. Sub-cut (2) 1 $\frac{1}{2}$ " x 19 $\frac{1}{2}$ " strips.

From the Small Dots - Med. Blue (D), cut:

- (1) 2 $\frac{1}{2}$ " x WOF strip. Sub-cut (2) 2 $\frac{1}{2}$ " x 19 $\frac{1}{2}$ " strips.
- (1) 2 $\frac{1}{2}$ " x WOF strip. Sub-cut (8) 2 $\frac{1}{2}$ " x 3 $\frac{1}{2}$ " strips.
- (3) 2 $\frac{1}{2}$ " x WOF strips for the binding.

From the Blooming Berries - White (E), cut:

- (1) 2 $\frac{1}{2}$ " x WOF strip. Sub-cut (10) 2 $\frac{1}{2}$ " x 3 $\frac{1}{2}$ " strips.

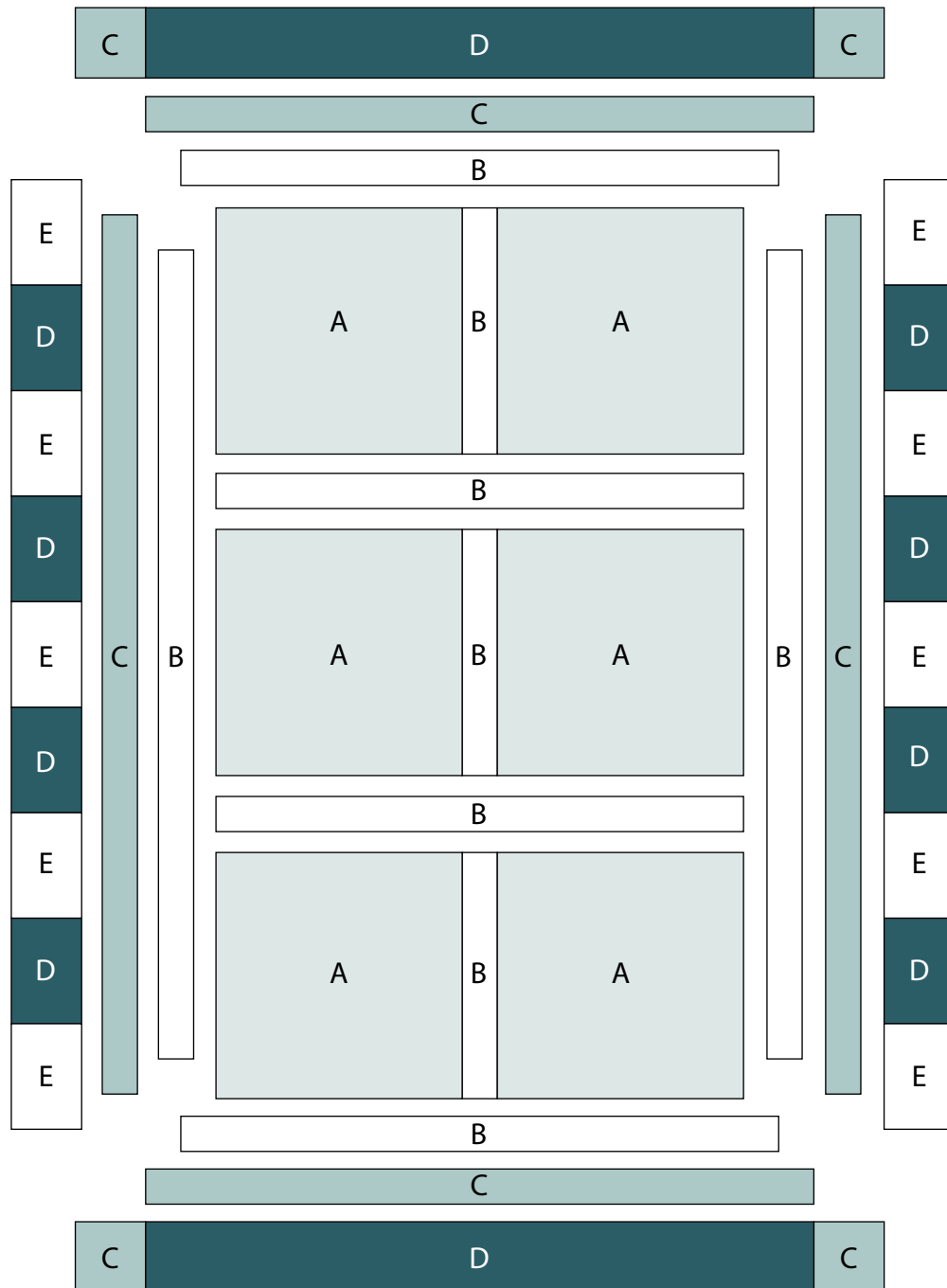
From the Circle Swirl - Royal (Backing), cut:

- (1) 31" x 39" strip for the back.

Quilt Top Assembly

(Refer to the Quilt Layout while assembling.)

1. Sew (1) 7 $\frac{1}{2}$ " Fabric A square to each side of (1) 1 $\frac{1}{2}$ " x 7 $\frac{1}{2}$ " Fabric B strip lengthwise to make (1) row. Repeat to make (3) rows total.
2. Sew together the (3) pieced rows and (2) 1 $\frac{1}{2}$ " x 15 $\frac{1}{2}$ " Fabric B strips lengthwise and alternating them to make the Center Block.
3. Sew (1) 1 $\frac{1}{2}$ " x 23 $\frac{1}{2}$ " Fabric B strip to each side of the Center Block. Sew (1) 1 $\frac{1}{2}$ " x 17 $\frac{1}{2}$ " Fabric B strip to the top and to the bottom of the Center Block.
4. Sew (1) 1 $\frac{1}{2}$ " x 25 $\frac{1}{2}$ " Fabric C strip to each side of the Center Block. Sew (1) 1 $\frac{1}{2}$ " x 19 $\frac{1}{2}$ " Fabric C strip to the top and to the bottom of the Center Block.
5. Sew together (5) 2 $\frac{1}{2}$ " x 3 $\frac{1}{2}$ " Fabric E strips and (4) 2 $\frac{1}{2}$ " x 3 $\frac{1}{2}$ " Fabric D strips end to end and alternating them to make (1) border strip. Repeat to make a second border strip. Sew (1) border strip to each side of the Center Block.
6. Sew (1) 2 $\frac{1}{2}$ " Fabric C square to each end of (1) 2 $\frac{1}{2}$ " x 19 $\frac{1}{2}$ " Fabric D strip. Repeat to make a second strip. Sew the strips to the top and to the bottom of the Center Block to make the quilt top.
7. Layer and quilt as desired.
8. Sew the (3) 2 $\frac{1}{2}$ " x WOF Fabric D strips together, end to end with 45-degree seams, to make the binding. Fold this long strip in half lengthwise with wrong sides together and press.
9. Bind as desired.



Quilt Layout

Every effort has been made to ensure that all projects are error free. All the information is presented in good faith, however no warranty can be given nor results guaranteed as we have no control over the execution of instructions. Therefore, we assume no responsibility for the use of this information or damages that may occur as a result. When errors are brought to our attention, we make every effort to correct and post a revision as soon as possible. Please make sure to check www.henryglassfabrics.com for pattern updates prior to starting the project. We also recommend that you test the project prior to cutting for kits. Finally, all free projects are intended to remain free to you and are **not for resale**.