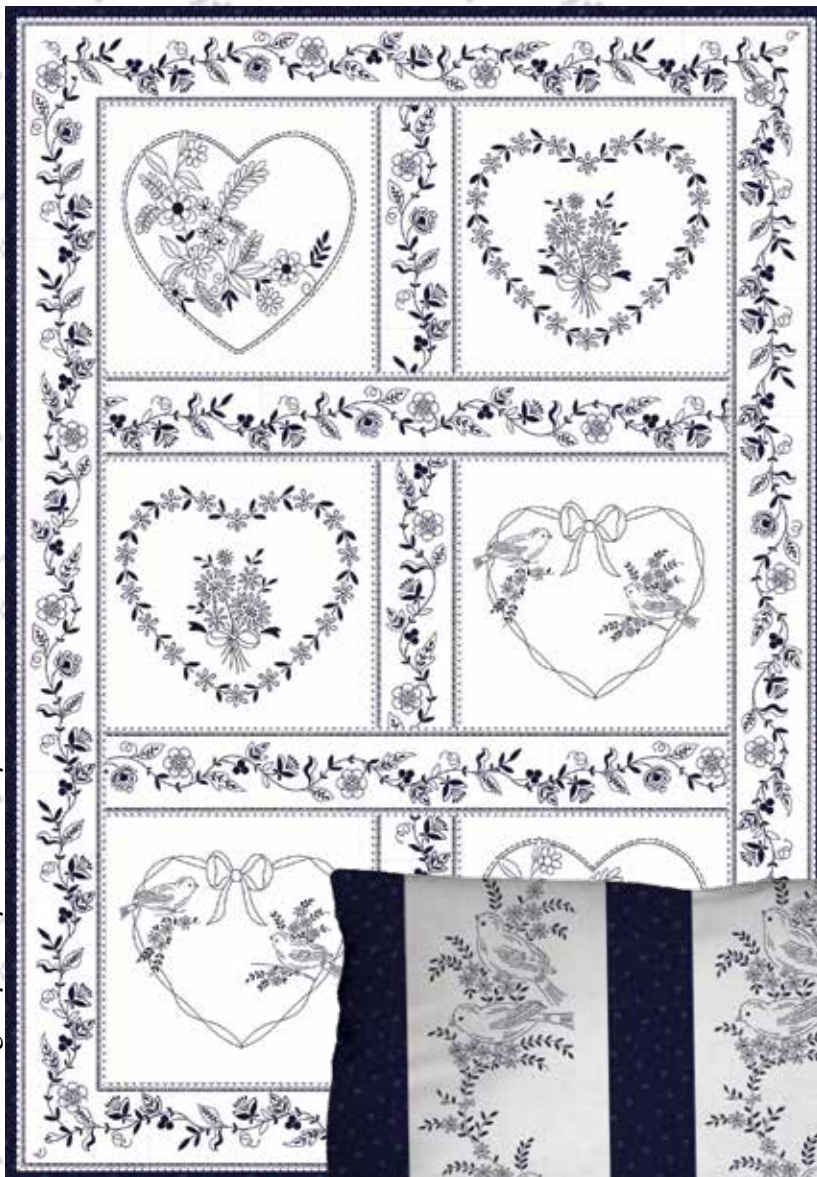


# Indigo Cottage



••••• A Free Project Sheet •••••  
••••• NOT FOR RESALE •••••

*By Mary Jane Carey*



Quilt Design by Mary Jane Carey

Includes  
BONUS  
Pillow  
Pattern



Quilt 3

Skill Level: Advanced Beginner

 Henry Glass & Co., Inc.



facebook

Finished Quilt Size: 18" x 26"  
Finished Pillow Size: 22 1/4" x 12"  
49 West 37th Street, New York, NY 10018  
tel: 212-686-5194 fax: 212-532-3525  
Toll Free: 800-294-9495  
www.henryglassfabrics.com

# INDIGO COTTAGE

Quilt 3

Finished Quilt Size: 18" x 26"  
 Finished Pillow Size: 22 1/4" x 12"

## Fabrics in the Collection



Embroidery Blocks - Royal  
 2115-77



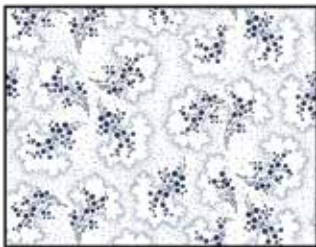
Border Stripe - Royal  
 2116-77



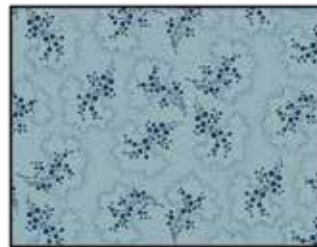
Large Plume - Lt. Blue  
 2117-17



Large Plume - Royal  
 2117-77



Blooming Berries - White  
 2118-11



Blooming Berries - Lt. Blue  
 2118-17



Geometric - Med. Blue  
 2119-71



Paisley - White  
 2120-11



Paisley - Royal  
 2120-77



Circle Swirl - Lt. Blue  
 2121-17



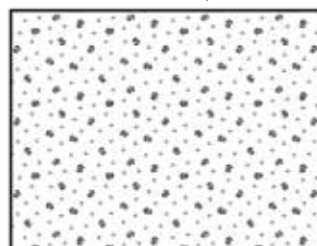
Circle Swirl - Royal  
 2121-77



Small Dots - White  
 2122-11



Small Dots - Med. Blue  
 2122-71



Ditsy Daisy - White  
 2123-11



Ditsy Daisy - Med. Blue  
 2123-71



Ditsy Daisy - Royal  
 2123-77

# INDIGO COTTAGE

## Quilt 3

### Quilt Materials

1 panel	Embroidery Blocks - Royal (A)	2115-77
1 ½ yards	Border Stripe - Royal (B)	2116-77
⅓ yard	Ditsy Daisy - Royal (C)	2123-77
1 yard	Ditsy Daisy - Royal (Backing)	2123-77

\*Includes binding

### Quilt Cutting Instructions

*Please note: all strips are cut across the width of fabric (WOF) from selvage to selvage unless otherwise noted.*

#### From the Embroidery Blocks - Royal (A), fussy cut:

- (6) 6 ½" blocks.

#### From the Border Stripe - Royal (B), cut:

- (2) 2 ½" x 30" Length of Fabric (LOF) strips.
- (2) 2 ½" x 22" LOF strips.
- (2) 2 ½" x 14 ½" LOF strips.
- (3) 2 ½" x 6 ½" LOF strips.

#### From the Ditsy Daisy - Royal (C), cut:

- (3) 2 ½" x WOF strips for the binding.

#### From the Ditsy Daisy - Royal (Backing), cut:

- (1) 26" x 34" strip for the back.

### Quilt Top Assembly

*(Refer to the Quilt Layout while assembling.)*

1. Sew (1) 6 ½" Fabric A block to each side of (1) 2 ½" x 6 ½" Fabric B strip lengthwise to make (1) row. Repeat to make (3) rows.
2. Sew together the (3) pieced rows and (2) 2 ½" x 14 ½" Fabric B strips lengthwise and alternating them to make the Center Block.
3. Center (1) 2 ½" x 30" Fabric B strip on (1) side of the Center Block and pin in place. Start sewing the strip a ¼" from the top edge of the block and stop a ¼" from the bottom edge. **DO NOT TRIM THE EXCESS.** Repeat with the opposite side.
4. Repeat Step 3 to sew (1) 2 ½" x 22" Fabric B strip to the top and to the bottom of the Center Block, making sure to stop and start ¼" away from each end of the block. To miter each corner, fold the Center Block on a diagonal, wrong side together. This should line up the strips from adjacent sides (Fig. 1).

5. Starting at the sewn seam (represented by the arrow in Figure 1), draw a 45-degree line to the edge of the fabric. Sew on the drawn line. Trim the excess fabric leaving a ¼" seam. Repeat this step with the remaining corners to make the quilt top.

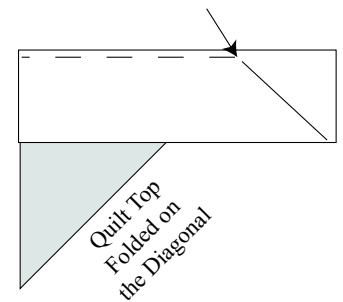
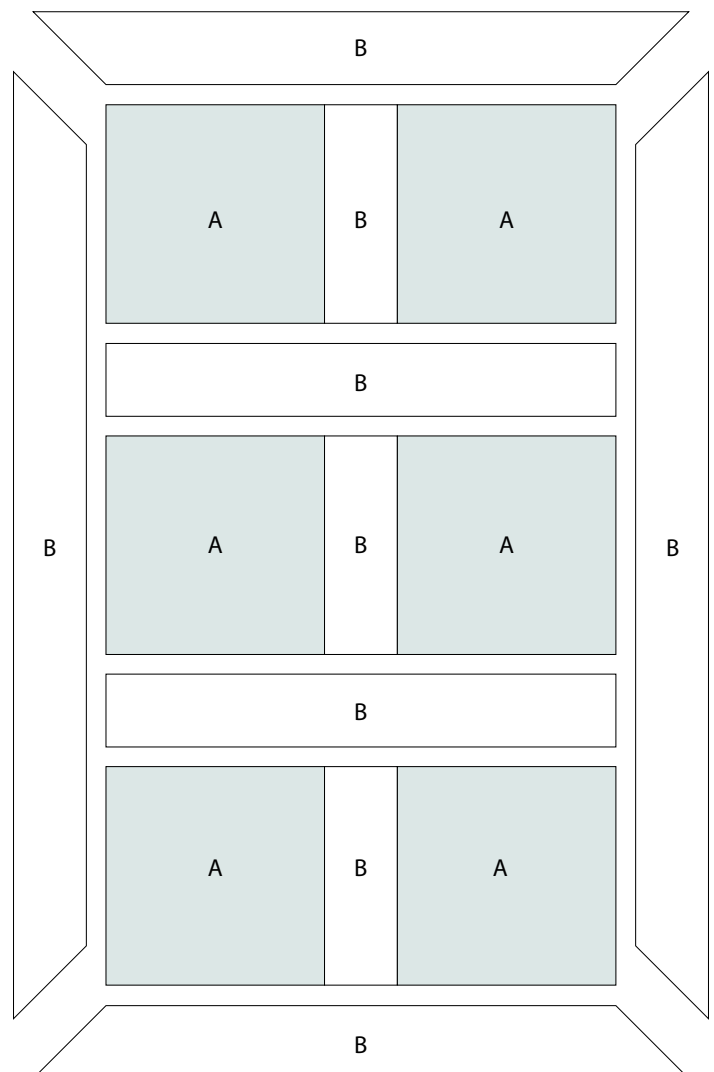


Fig. 1

6. Layer and quilt as desired.
7. Sew the (3) 2 ½" x WOF Fabric C strips together, end to end with 45-degree seams, to make the binding. Fold this long strip in half lengthwise with wrong sides together and press.
8. Bind as desired.



Quilt Layout

### Pillow Materials

½ yard	Border Stripe - Royal (A)	2116-77
¼ yard	Ditsy Daisy - Royal (B)	2123-77
½ yard	Large Plume - Royal (Backing)	2117-77

### You Will Also Need:

- Poly Fil Stuffing

### Pillow Cutting Instructions

*Please note: all strips are cut across the width of fabric (WOF) from selvage to selvage edge unless otherwise noted.*

#### From the Border Stripe - Royal (A), fussy cut:

- (3) 5 ¼" x 12 ½" Length of Fabric (LOF) strips.

#### From the Ditsy Daisy - Royal (B), cut:

- (2) 2 ½" x WOF strips. Sub-cut (4) 2 ½" x 12 ½" strips.

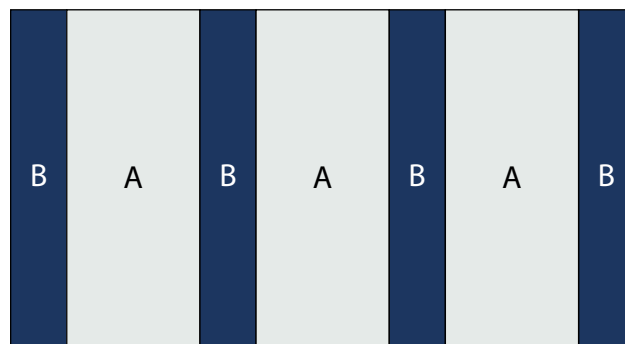
#### From the Large Plume - Royal (Backing), cut:

- (1) 12 ½" x 22 ¾" strip for the back.

### Pillow Top Instructions

*(Refer to the Pillow Layout while assembling.)*

9. Sew together (4) 2 ½" x 12 ½" Fabric B strips and (3) 5 ¼" x 12 ½" Fabric A strips lengthwise and alternating them to make the pillow top.
10. Sew together the pillow top and backing right sides together leaving a 4" opening for turning.
11. Turn the pillow rights sides out and stuff using the poly fil.
12. Whip stitch the opening closed.



Pillow Layout

*Every effort has been made to ensure that all projects are error free. All the information is presented in good faith, however no warranty can be given nor results guaranteed as we have no control over the execution of instructions. Therefore, we assume no responsibility for the use of this information or damages that may occur as a result. When errors are brought to our attention, we make every effort to correct and post a revision as soon as possible. Please make sure to check [www.henryglassfabrics.com](http://www.henryglassfabrics.com) for pattern updates prior to starting the project. We also recommend that you test the project prior to cutting for kits. Finally, all free projects are intended to remain free to you and are not for resale.*